

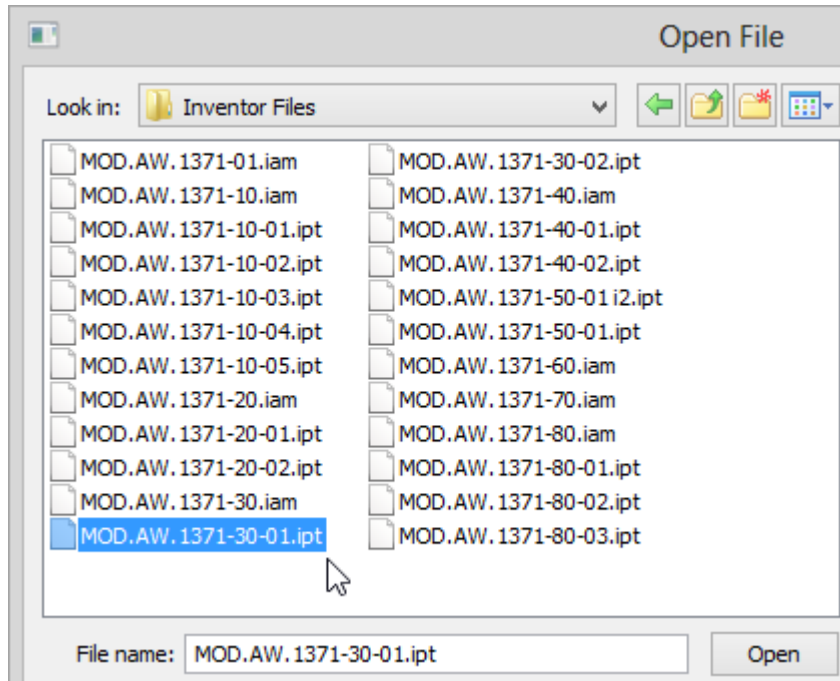
## Tech Tip

Opening Inventor Files using Solid Edge

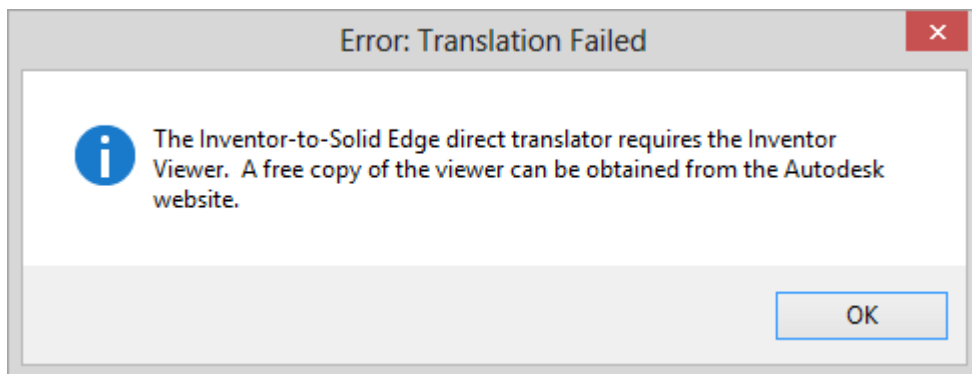
# Opening Inventor Files using Solid Edge

ST6 allows you to open Inventor files, but before reading in the Inventor file (.ipt), you will have to make sure you download the Inventor Free Viewer from Autodesk website on the following location or just using any searching engine typing 'Inventor Viewer'

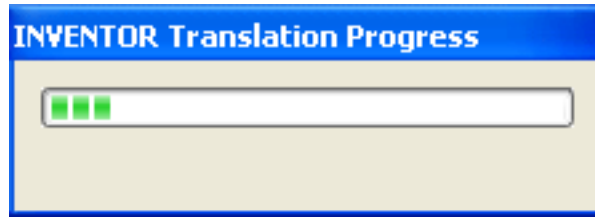
<http://usa.autodesk.com/adsk/servlet/pc/index?id=10535296&siteID=123112>



Without the free viewer you will get the following message:



Once you have downloaded the Inventor viewer and clicked open (and defined your template file), you will get the message that it is translating the file:



The file should then open and be ready for use or modifying with Synchronous Technology:

